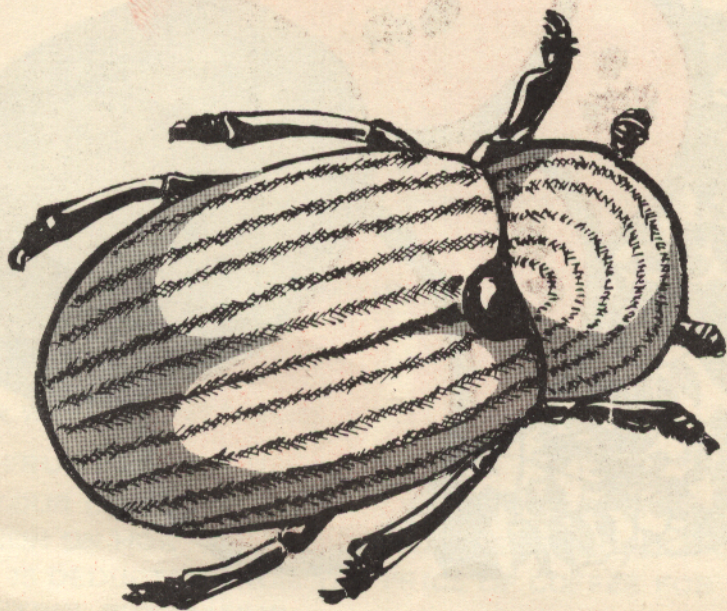


**COFFEE FARMER**  
**YOUR No. 1**  
**ENEMY**



**COFFEE BERRY BORER**



# **WIPE OUT**

## **COFFEE BERRY BORER**



## **SAVE THE COFFEE INDUSTRY**



**12 OF EVERY 100 BOXES CHERRY COFFEE  
OF THE 1980-81 CROP WERE DAMAGED BY  
THE COFFEE BERRY BORER.  
THIS MEANS LESS FOREIGN EXCHANGE  
EARNING AND LESS MONEY IN YOUR POCKET.**

## WHAT CAN YOU DO?

- ★ KEEP YOUR COFFEE FIELD CLEAN
- ★ REMOVE EXCESSIVE SHADE
- ★ REMOVE ALL DRY BERRIES FROM THE FIELD AND DESTROY THEM
- ★ ASSIST YOUR COFFEE BERRY BORER SPRAY TEAM TO DO A GOOD JOB.
- ★ BEFORE SPRAYING IS DONE:
  - KEEP CHILDREN AWAY FROM THE AREA.
  - REAP MATURE CROPS.
  - REMOVE LIVESTOCK.
  - COVER WATER CONTAINERS.
- ★ WASH ALL FRUITS BEFORE USE
- ★ CONTACT YOUR COFFEE OFFICER OR EXTENSION OFFICER FOR FURTHER INFORMATION ON HOW YOU CAN BRING THIS PEST UNDER CONTROL.
- ★ NO MONEY IS DEDUCTED FROM THE PRICE OF COFFEE FOR THE BERRY BORER CONTROL PROGRAMME.





**IN ANY LANGUAGE  
YOUR COFFEE  
IS  
**No. 1**  
IN THE WORLD.**

Qahwah • Coffee • Kaffe • Koffie • Cafe • Kafa • Kawa • Caffè

Kafa • Kawa • Caffè • Kahvi



Kaffee • Kaffe • Koffie • Cafe

COFFEE INDUSTRY BOARD, P.O. BOX 508, KINGSTON. TELEPHONE: 92-37211-3